

# OSPREY UNIT 4

Trinity Park, Chingford, E4 8TD



## SPECIFICATION

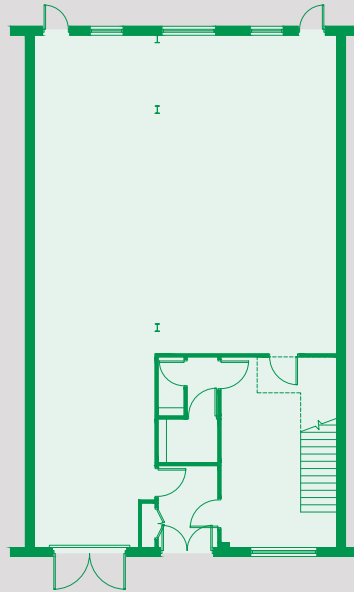
### Industrial

- Electric loading door
- 3 Phase Power
- M & F W.C's

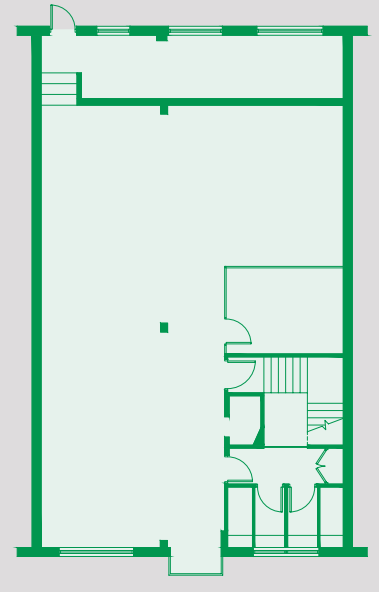
### Offices

- Gas fired central heating
- Ceiling mounted A/C unit
- Suspended ceilings
- Integral light fittings
- Raised floor & junction boxes
- Kitchenette
- M & F W.C's

GROUND FLOOR



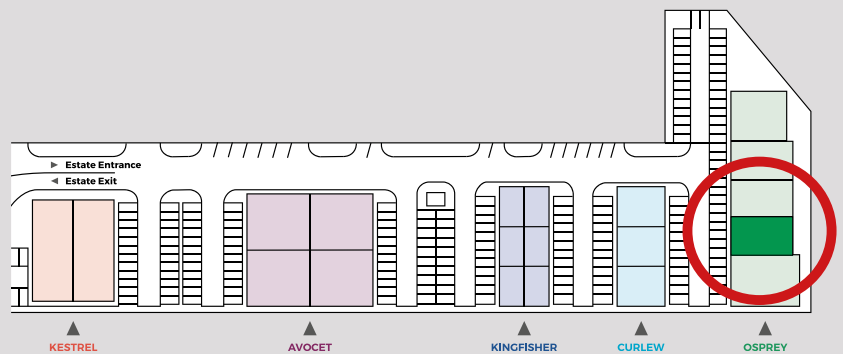
FIRST FLOOR



## TOTAL SPACE

 3,950 SQ FT / 366.9 SQ M

 9 PARKING SPACES



# OSPREY UNIT 4

Trinity Park, Chingford, E4 8TD



**bray  
fox  
smith**

**SIMON KNIGHT**

T: 07818 012 419

[simon.knight@brayfoxsmith.com](mailto:simon.knight@brayfoxsmith.com)

**GLENNY**

**SAM SANDELL**

T: 020 3141 3500

[s.sandell@glenny.co.uk](mailto:s.sandell@glenny.co.uk)